

Erdgeschoss M1:100

DN 250 Stz
4,429%

NW 150

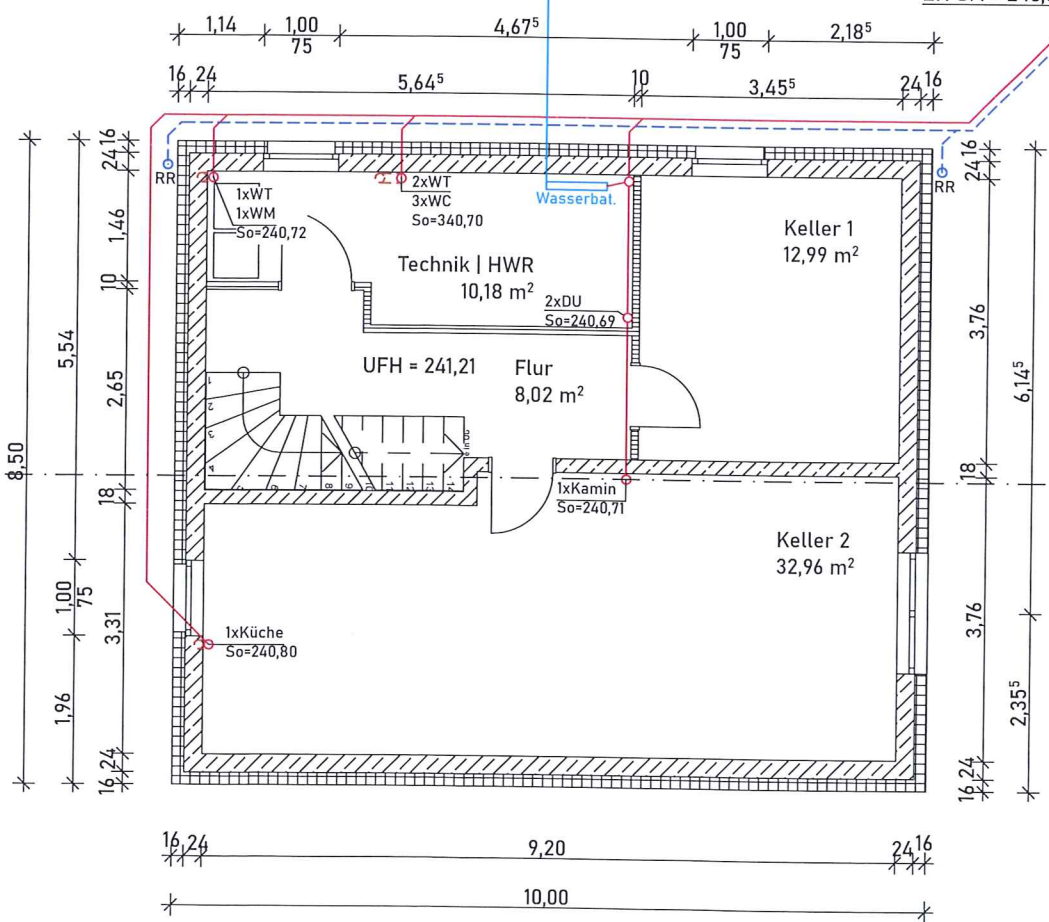
Frischwasserrtg.
in Leerrohr verlegt

EH ca.239,70

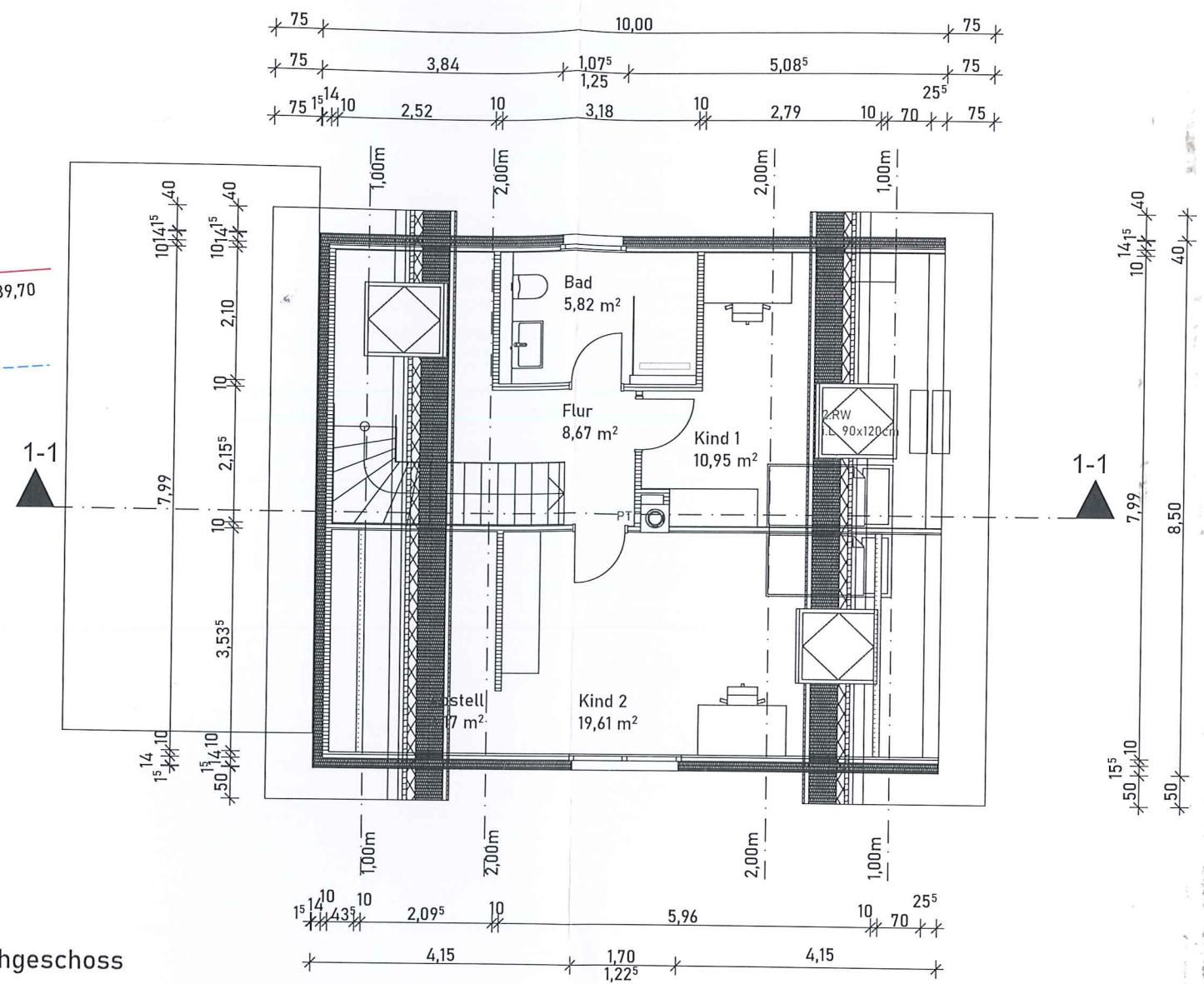
KS DN 1000
So = 240,05

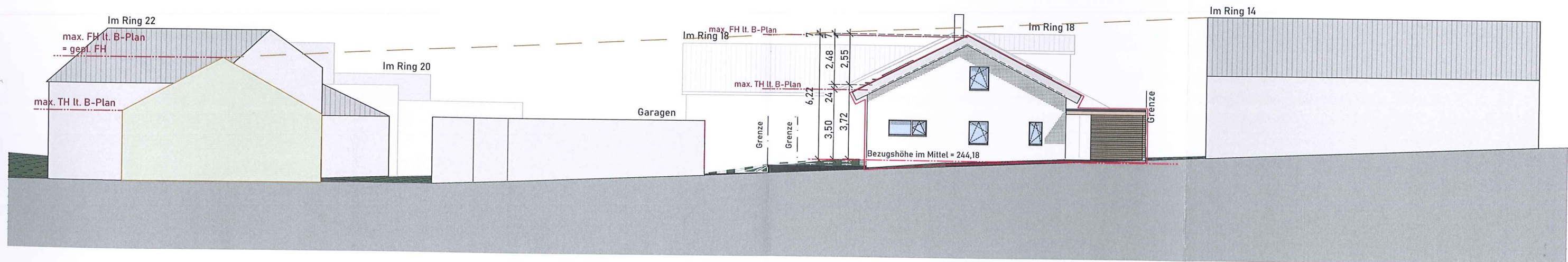
EH SM = 240,59

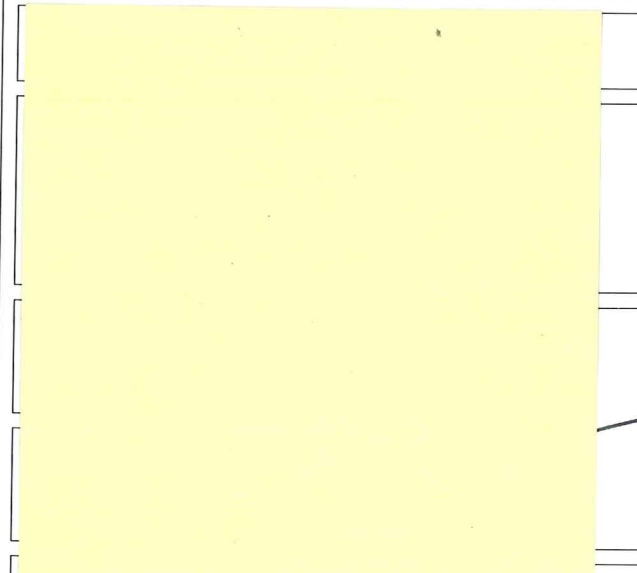
EH RW=243,35

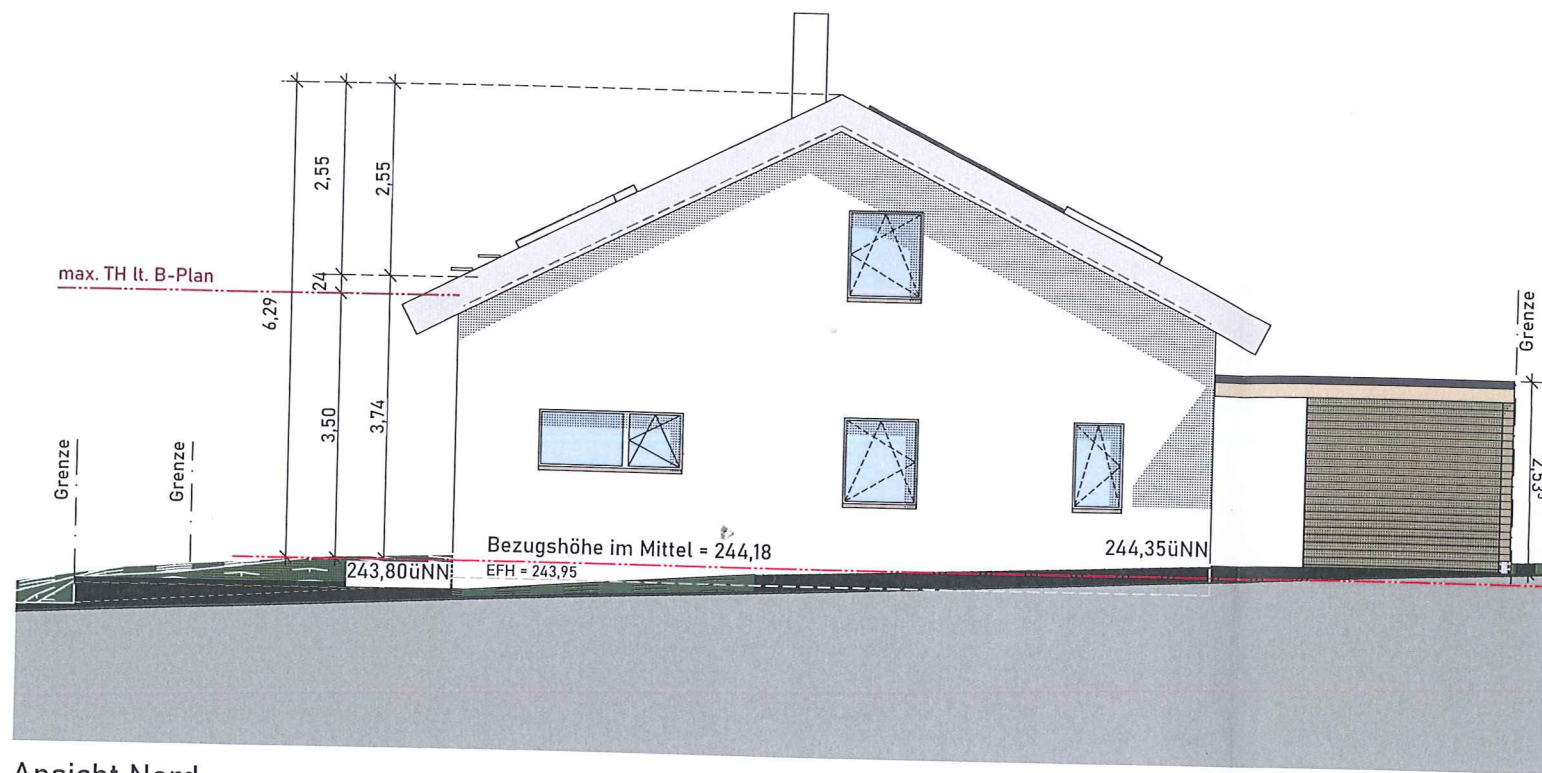


Dachgeschoss

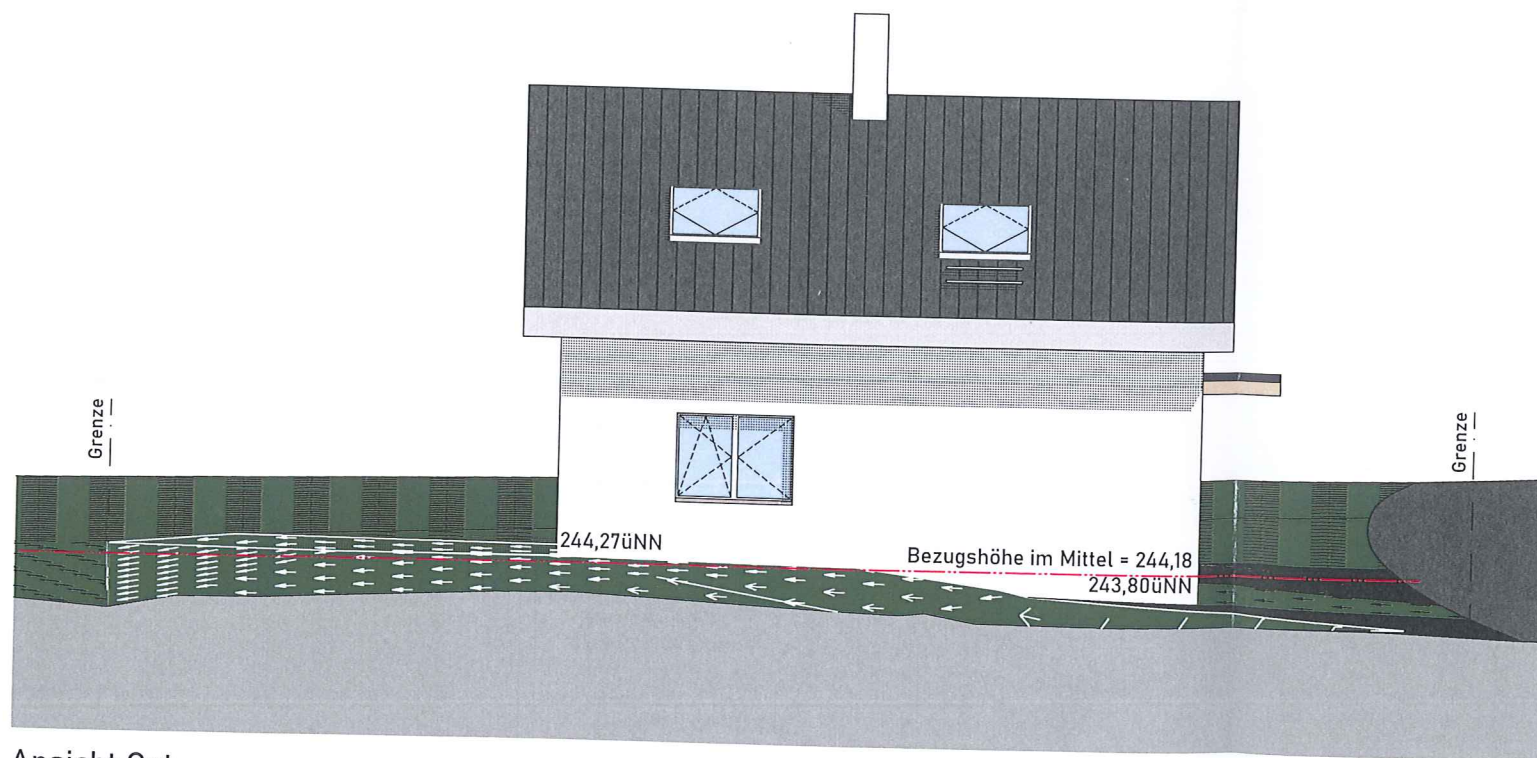




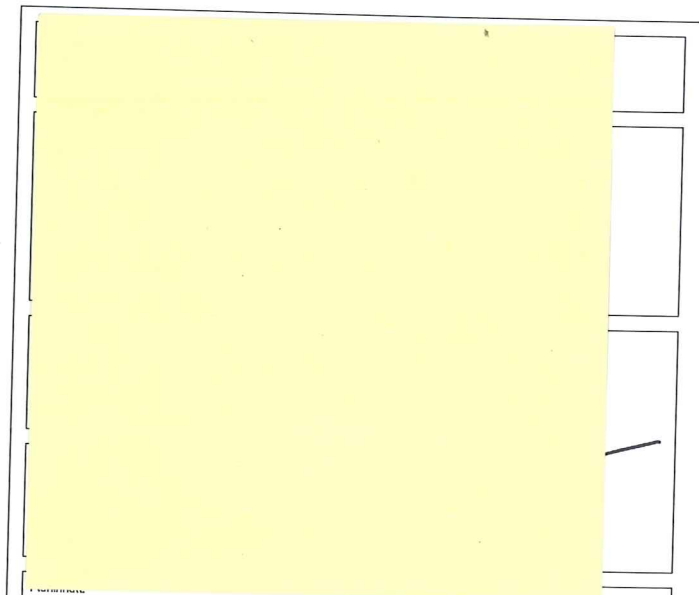

 Straßenabwicklung M1:200

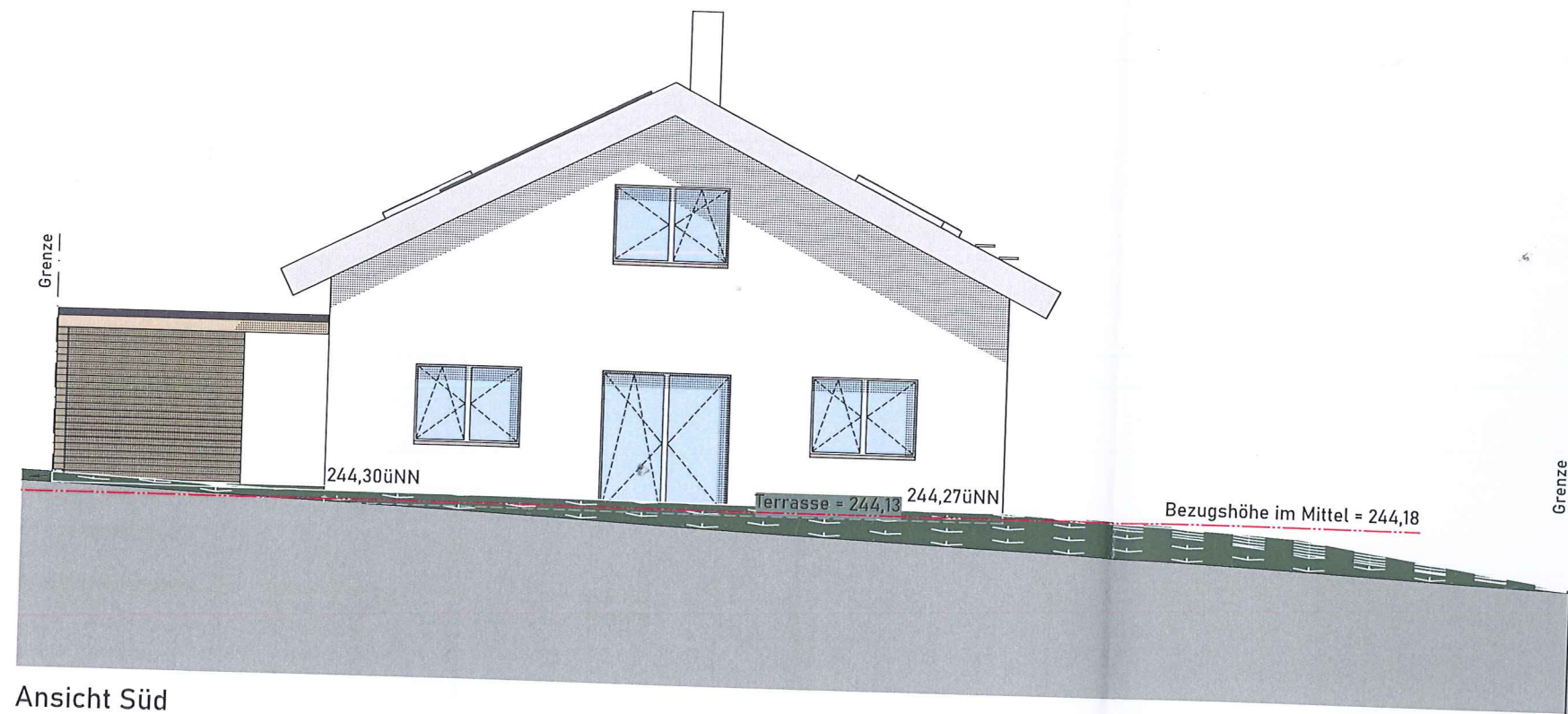


Ansicht Nord



Ansicht Ost

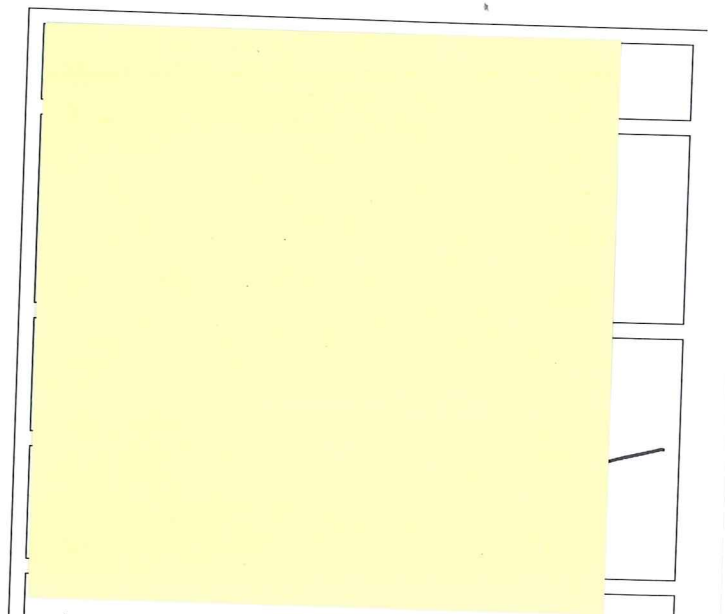




Ansicht Süd



Ansicht West



Ansicht Süd | West M1:100